

RLI-80 Non-Contact Radar Level Sensor

- ▶ Measuring Range up to 49.2 ft (15 m)
- ▶ Accuracy: ± 0.2 in (5 mm)
- ▶ Measurement is Independent of Temperature, Pressure and Moisture Variations
- ▶ Minimum Dielectric Constant (ϵ_r) > 2
- ▶ 4–20 mA and Modbus® Outputs
- ▶ Temperature Range: -40°F to $+176^\circ\text{F}$ (-40°C to $+80^\circ\text{C}$)
- ▶ Pressure: Full Vacuum to 43 PSI (3 bar)
- ▶ IP67 Protection
- ▶ Approvals: Intrinsically Safe, cULus, CE, ATEX/IECEX

The RLI-80 Non-Contact Radar Level Sensor is a no-moving parts continuous level transmitter for reliable performance in challenging OEM and industrial tank level applications. RLI-80 Non-Contact Radar comes standard with 4–20 mA, Modbus®, and Bluetooth® connectivity for configuration and setup.

The RLI-80 provides accurate level measurement in medias with a dielectric constant of 2 or greater. Constructed of chemically inert PVDF material and designed to withstand IP67 conditions, the RLI-80 withstands the harshest conditions. The 2" NPT mounting provides adaptability to be used in tanks as large as 49.2 ft (15 m). The RLI-80 is unaffected by changes in physical properties of the application such as pressure, temperature, or vapors.

Applications

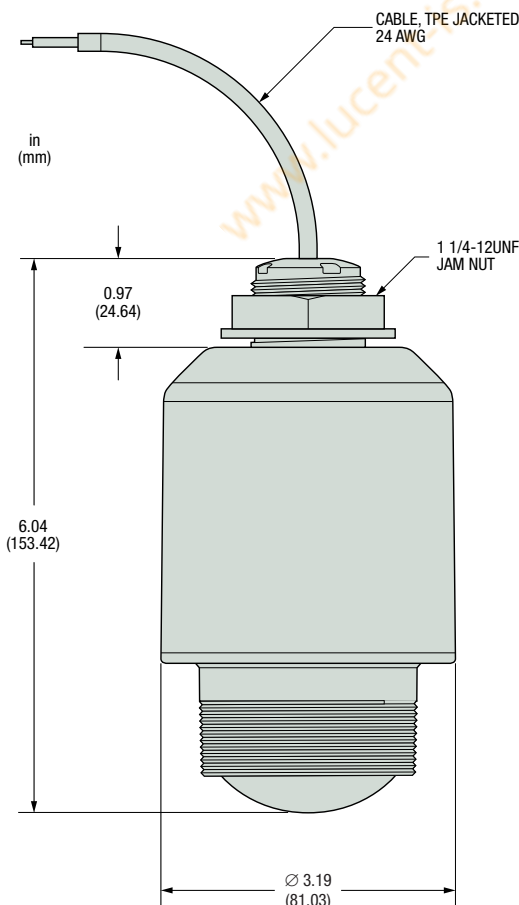
- Water & Wastewater
- Food & Beverage Process Tanks
- Fuel Tank Farms
- Chlorination Systems
- Oil & Water Reclamation Systems
- Commercial Marine
- Cooling Towers
- Water Purification
- Power Generators
- Hydraulic Power Units
- Agriculture Tanks & Equipment

Specifications

Measuring Range	Up to 49.2 ft (15 m)
Accuracy	± 0.2 in (5 mm)
Output	2-wire 4–20 mA or 4-wire Modbus
Configuration	Bluetooth® and Modbus®
Ingress Protection	IP67
Media Dielectric Constant	(ϵ_r) > 2
Temperature Range	-40°F to $+176^\circ\text{F}$ (-40°C to $+80^\circ\text{C}$)
Pressure Range	Full Vacuum to 43 PSI (3 bar)
Frequency	80 GHz
Beam Angle	8°
Process Connection	2" NPT
Bracket Mounting	1 1/4-12 Straight Thread (cable end)
Electrical Connection	15', or 30' TPE Jacketed Cable
Supply Voltage	24–36 VDC
Wetted Materials	
Housing	PVDF
Seal	FKM
Approvals	Intrinsically Safe, cULus, CE, ATEX/IECEX



Dimensions



Configuration & Setup

- ▶ Wireless configuration via Bluetooth® or Modbus® connection to iOS or Android devices and Windows PCs
- ▶ Download the Gems Sensors Radar App from the Apple App Store or the Google Play Store



How to Order

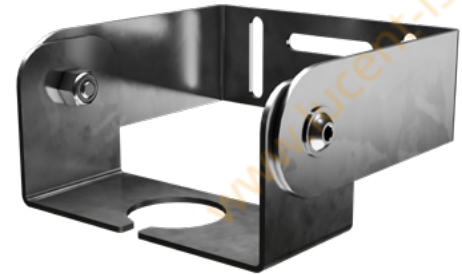
Use the **bold** characters from the chart below to construct a product code.

	RLI-80	-	C	-	X	-	X
Series							
Process Connection							
C - 2" NPT							
Output Option							
1 - 4-20mA							
2 - Modbus							
Cable Length							
1 - 15 feet							
2 - 30 feet							

Accessories

- ▶ For mounting onto walls and ceilings

Accessories	Order Code
RLI-80 Mounting Bracket	261977



The RLI-80 has a 1¼-12 UNF thread connection at the top of the sensor for attaching to a bracket